

Drainage solutions for your business

Customers at the
heart of what we do




**LEADING
ENVIRONMENTAL
SOLUTIONS**



If we aren't here for you,
we're there for you.

Our Aim



Our aim is to provide a friendly service to the community in a proactive way using Technology, Industry knowledge and Innovation.

The business is aimed to provide a great customer experience in one of the most challenging areas of reactive and proactive maintenance.

To do this we require a proactive approach using technology and innovation. By ensuring we address the issue in the first instance and then completing a proactive consultation with the customer ensures the client is aware of what caused the issue, how we can stop it in the future and if anything further will contribute to the fault reoccurring.

We are a Progressive Drainage business with the customer at the heart of what we do. We currently offer our services across East Anglia and the South East whilst working in partnership with nationwide companies.



Values

Our values play an important part for us at Leading Environmental Solutions and as such we expect all employees to:

- Ensure we do what we have committed to.
- Ensure we deliver on time to our customers.
- Strive to give a first-class service to all customers.

We can help



- Drainage
- Plumbing
- Gas safety
- Leak detection
- Small building works
- Handyman



What makes us stand out is the mixture of experience we have in sectors we aim to serve.



Where we work

What makes us stand out is the mixture of experience we have in the sectors we aim to serve. We are well equipped at understanding the fast pace of commercial businesses having managed these previously, as well as the experience our operations team has in the field from managing projects to managing long standing relationships and contracts.

Our main strength is having developed open and responsive business relationships in our sector. Our location in Stansted sees fantastic travel networks to serve our East Anglian, Essex and Home counties-based customers.

Drainage



Repair and replace

When a damaged drain has been identified, as needed and with the use of our CCTV service, an in-situ repair can be carried out by using insurance recommended drain liners that carry a 25 year guarantee.

Unfortunately, there are times where a section of pipe is too damaged to be repaired and needs intrusive works to replace the service.

In line with our track, trace and map service the intrusive works are carried out with safety and precision for a speedy effective resolve.



CCTV

A CCTV survey is predominantly used to investigate ongoing drainage issues. The service can be used to carry out a visual inspection or a detailed report for further repair works.

Underground drainage can become damaged from tree roots, subsidence, heavy vehicle traffic and incorrect installation.

Most of which can be easily repaired if found sooner with the cost of repair often cheaper with less disruption to services.

Grease (Fog) management

Despite every best effort (FOG) waste continues to cause problems within the drainage system, however a well-designed and maintained FOG management system greatly reduces the risk and consequence of a blockage.

Regular emptying and cleaning of both the trap and associated pipe work with jetting gives great peace of mind against blockages moving forward.



The environment is everyone's responsibility and future.



Jetting

High pressure water jetting is the most common and recommended means of cleaning and clearing drains and other surfaces both internal and external.

By using a wide variety of fittings with precise application, high pressure water will clear most blocked drains and break up the cause of the problem including:

- Fully cleans pipework to prevent costly blockages
- Cleans fat and grease traps
- Cleans ventilation and ducting
- Easily removes graffiti, chewing gum and grime
- Washes down septic tanks and chambers
- Cleans and restores brick and stone faces

Tanker services

A tanker can be used for the safe emptying and cleaning of septic tanks, cesspits, gullies and larger chambers of both foul and surface water.

Under Government legislation and in-line with the Environmental agencies waste carriers' licence, Leading Environmental solutions ensure all waste is disposed of by the recognized, recommended and recorded methods.

"The environment is everyone's responsibility and future".

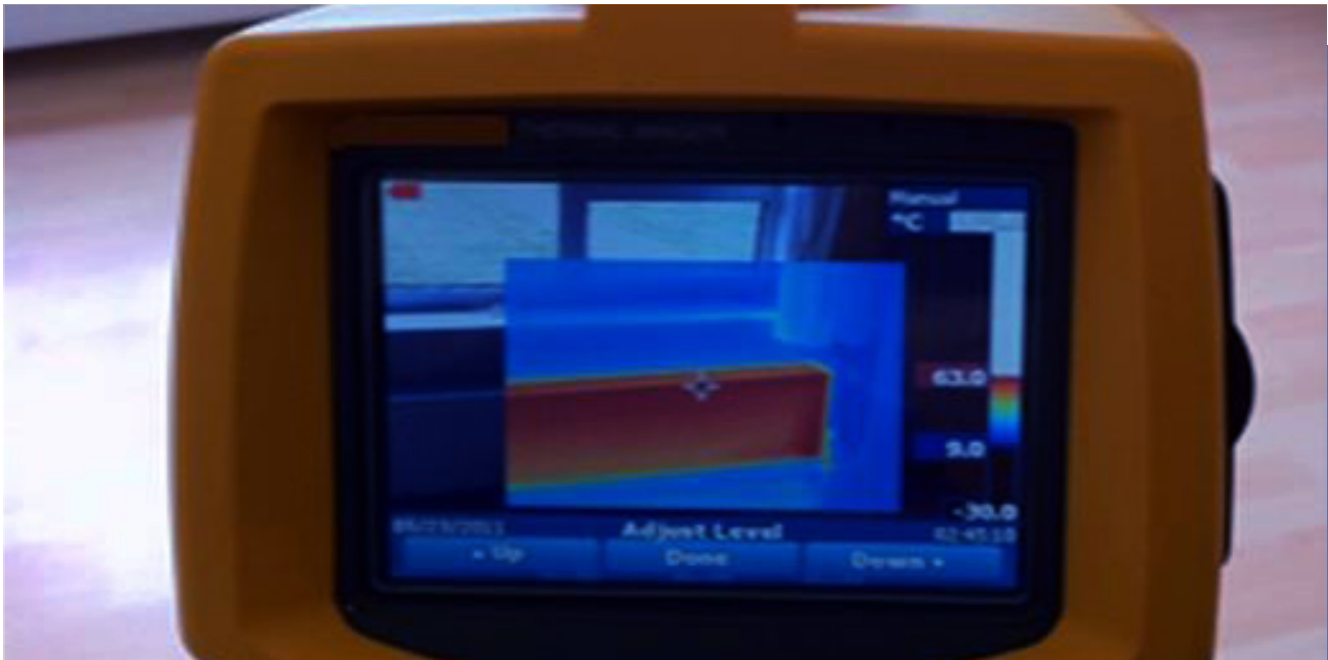
Electro mechanical machining

Electromechanical machines are widely used across the drainage industry where access is restricted or health and safety needs dictate.

By using different sized machines and a variety of attachments this method of working is equally as effective as water jetting in clearing and cleaning drainage.

With the correct application this work method can be used on sinks, showers, baths, stack pipes as well as underground drainage.

Leak Detection



Thermal Imaging Cameras

Thermal Imaging devices are used to trace the path of hot and cold pipework under floors and behind walls.

Thermal Imaging is normally used at the start of the Trace as the engineer maps out the hidden pipework in your home.

Acoustic Listening Devices

Acoustic Listening Devices are used to listen for the sound of water or gas escaping from pipework up to 3 meters below the surface.

They are used to pinpoint the exact location of a leak under an internal floor or external surface.



CCTV

CCTV can be used to look for water leaks inside walls, under cupboards, floorboards and anywhere where a physical inspection is required but it not possible.

Snake Cameras are used in the latter stages of a leak detection, to confirm the water leak is where suspected before access is made.

Tracer Gases

Before tracer gases can be used, the suspected pipework needs to be completely emptied of water. The tracer gases are completely safe and nontoxic, comprising of 95% Nitrogen & 5% Hydrogen.

These gases escape the pipework at the location of the leak, rising to the surface through almost all materials before being located by our sniffing devices.

Gas

As a landlord of a domestic or commercial property, it is your legal obligation to have all gas appliances regularly inspected and safety tested by a Gas Safe registered engineer.

- Your annual safety check will be performed in-line with the very latest safety regulations, by a Gas Safe Registered engineer.
- Our team will safely check all applicable gas appliances and units throughout the property and provide you with the relevant inspection certificates.



Our gas safety inspections will include:

- Checking that all gas appliances are correctly connected to the mains gas supply (appliances include gas cookers, ovens, hobs, gas boilers, gas fires etc.)
- Checking the pressure level of the gas against manufacturer instructions
- Testing flue flow performance
- Ensuring that safety devices are in operation, are fully functional, and have not expired
- Once we've checked all gas appliances and they all pass, we'll complete all the relevant paperwork and provide you with a landlord certificate.
- Alternatively, if there's any remedial work that needs to be carried out at another time, we'll arrange a suitable time to come back and carry out the repairs.
- In our bid to ensure that you are fulfilling your obligations as a landlord and to provide you with peace of mind, we will provide you with an electronic PDF certificate at the end of every inspection.
- If we notice any defects or safety concerns, we will offer you impartial advice on the best way to remedy the problem. If you choose us to complete these works, we can give you a no obligation quote so that all expenses are clear to you before the work gets started.

Small building works



Manhole and manhole cover replacements

Similar to drain line collapses or damage we are able to provide a solution to replace the cover, frame and chamber as required and if internal to the site, the repair of the tiled or wooden flooring.



Drain lining and patch repairs

Drain lining or Patch liners can be used to repair drain line defects within a certain section of sewer or drainage system. Generally liners are used when there is a particular isolated issue or there are multiple issues within a shorter section area of pipe work.

Before Patch Lining



After Patch Lining





01279 881588



info@leadingenvironmentalsolutions.co.uk



www.leadingenvironmentalsolutions.co.uk



Unit 6 The Courtyard, Foresthall Road, Stansted, CM24 8TS



**LEADING
ENVIRONMENTAL
SOLUTIONS**